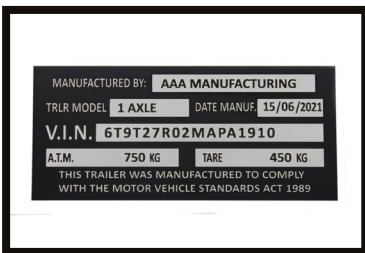
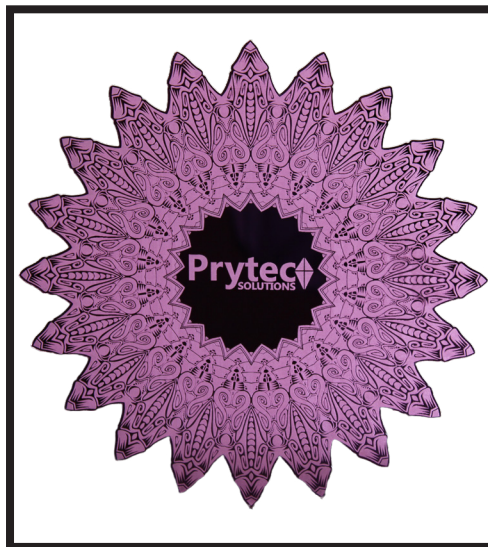




\$25,495.00
Excl. GST

The PLS-1390 laser machine is a versatile and powerful tool designed for precise engraving and cutting of a wide range of materials, including acrylics. Equipped with a 130W laser, it can effortlessly create sleek polished edges and produce high-detail text and graphics with stunning accuracy. With an expansive working area of 1300mm x 900mm, this machine is suitable for medium to large scale engraving and cutting projects.

- ✓ Supplied with all ancillary equipment. (Extraction fan & air assist pump)
- ✓ 2 Year Warranty including laser tube. (Excluding mirrors and lenses) - subject to regular 6 monthly maintenance



SPECIFICATIONS:

Overall Size:	1850mm x 1480mm x 1050mm
Laser Source:	130 Watt CO2 laser tube or metal tube, water cooled
Max Engrave Speed:	1000mm/sec
Max Cut Speed:	100mm/sec
Location Precision:	Less than 0.01mm
Scanning Precision:	up to 1000DPI
Minimum Character size:	1.0mm x 1.0mm
Graphic File Types:	HPGL, PLT, BMP, DXF, AI,

FEATURES:

- **Work table:** 1300mm x 900mm
- **Engrave area:** 1240mm x 890mm
- In-line red light pointer
- Interlocked door for safe operation
- Motorised table height
- Wifi & USB connection
- On nozzle auto focus

- OPTIONAL ACCESSORIES -

ADVANCED FUME EXTRACTION

SPECIFICATIONS:

Overall size: 556mm x 605mm x 1470mm

Max air flow: 1500m³/hr, Air Pressure 2.3kPa

Max duct size: 150mm

Noise level: <75dBA

Power rating: 220V, 50Hz or 110Hz, 60Hz

1 Year Warranty (Excludes consumables)

\$2,995.00
Excl. GST

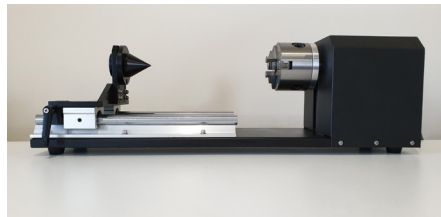
PFE Advanced
Fume Extraction



4th AXIS ROTARY

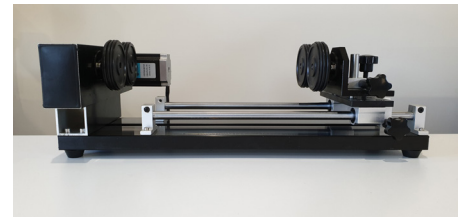
Easily engrave round items like bottles, mugs, glasses, etc. with one of our 4th Axis Rotary attachments.

3 JAW CHUCK



\$1,495
Excl. GST

QUICK CHANGE



\$995
Excl. GST

- PLS ADVANCED LASER SYSTEMS - AUTHORISED DEALERS -

NSW

Techie Tools
0490 048 307

info@techie-tools.com.au

QLD

Sign to Badge
07 3412 0285

simon@solutions.com.au

VIC

Prytec Head Office
03 8372 6444

sales@prytec.com.au

WA

Ramlec Enterprises
0430 299 289

admin@ramlec.com

SA

Prytec Office
0412 968 802

michael@prytec.com.au

TECHIE
TOOLS



Prytec
SOLUTIONS

RAMLEC ENTERPRISES

Prytec
SOLUTIONS