

## PLS-F1515 ADVANCED FIBRE LASER

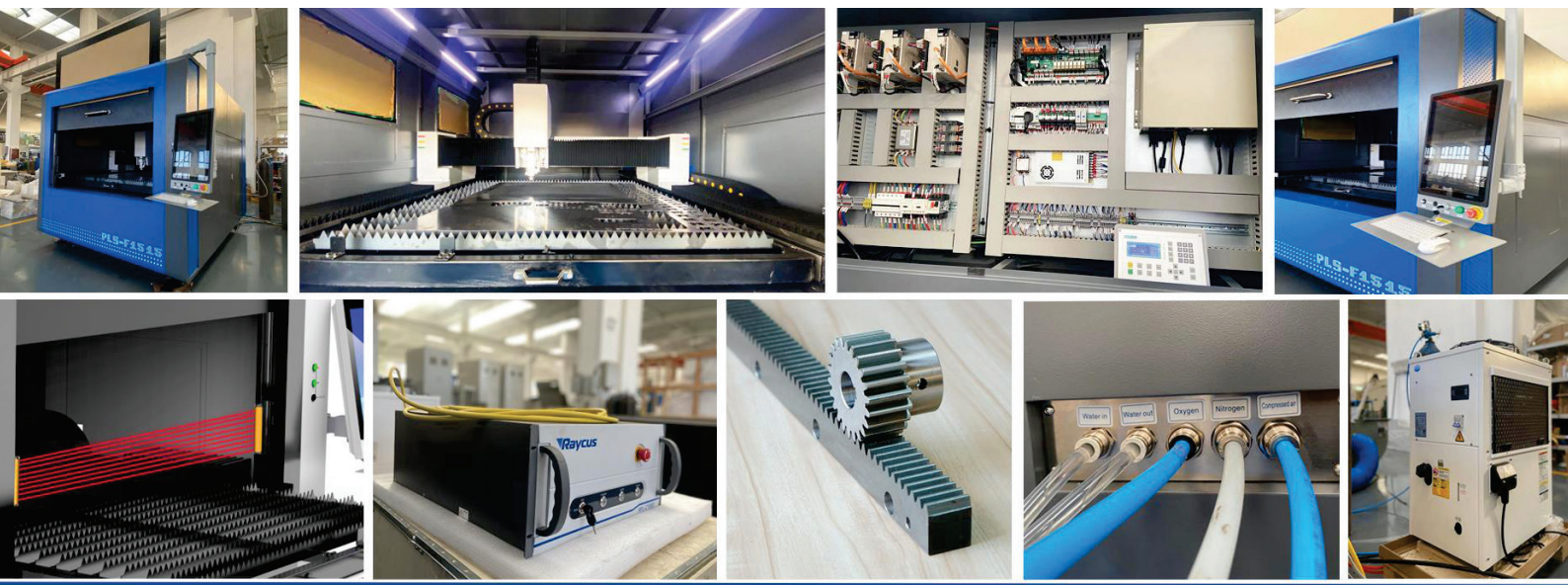


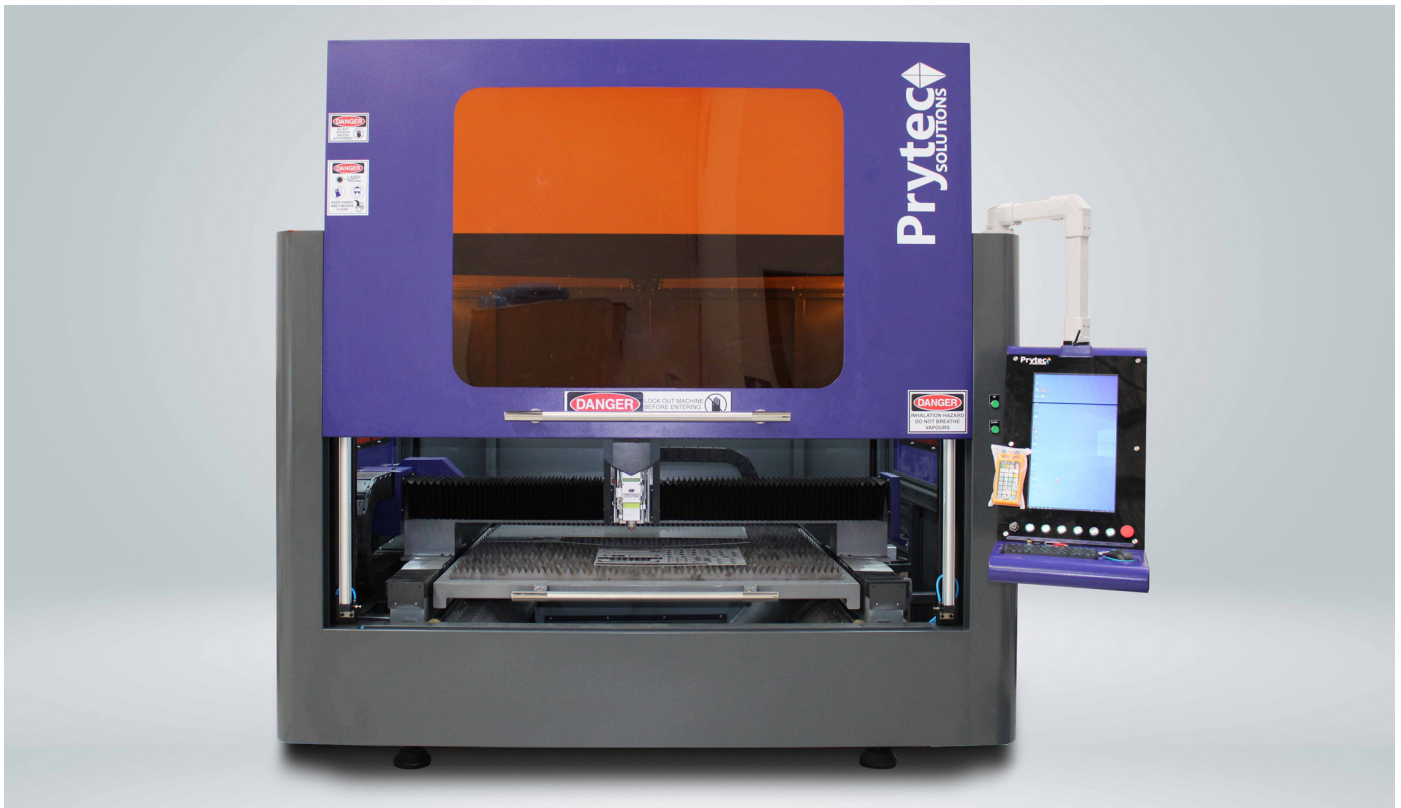
- ✓ High Accuracy Fibre laser source (JPT)
- ✓ Working area 1500mm x 1500mm
- ✓ Superior edge quality plus high cutting speed
- ✓ Fully enclosed protective cover with lifting door and safety interlocks
- ✓ Drawer type working table
- ✓ Automatic Exhaust Extraction system
- ✓ Safety interlocks as per Aus standards

PLS-F155 fully enclosed Fibre Laser Machine offers superior sheet metal cutting accuracy, greater precision, power, and speed than all its predecessors. Wide range of applications in metal processing, including: Mild Steel, Stainless Steel, Aluminum alloy etc.

### Cutting Capacity:

	1KW	2KW	3KW	4KW	6KW	AIR
<b>MILD STEEL</b>	12mm	16mm	20mm	22mm	25mm	0
<b>STAINLESS STEEL</b>	6mm	8mm	10mm	12mm	20mm	N2
<b>Aluminium</b>	4mm	6mm	8mm	10mm	16mm	N2
<b>BRASS</b>	3mm	5mm	6mm	8mm	12mm	N2

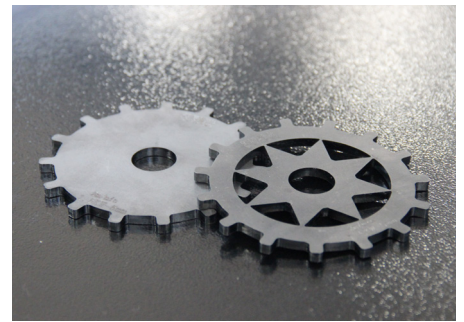
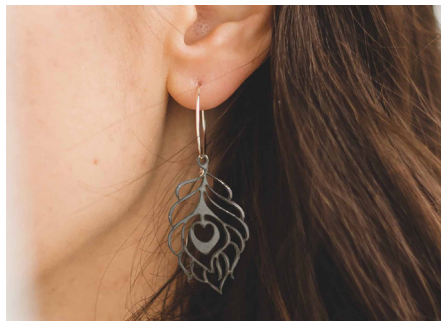
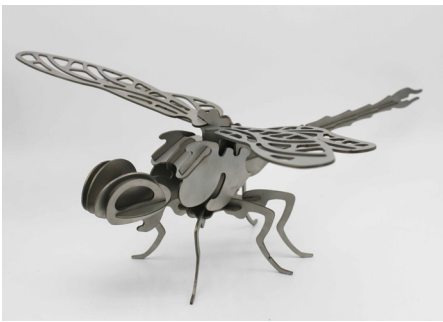




## Technical Data:

<b>Fibre Laser Power</b>	1KW-6KW
<b>Table Travels</b>	X Axis 1500mm Y Axis 1500mm Z Axis 120mm
<b>Rapid Speed</b>	140m/min
<b>X, Y Max. Acceleration</b>	1.5G
<b>Machine Dimension</b>	2.71m x 3.49m x 2m

<b>Location Precision</b>	±0.05mm
<b>Repeatability</b>	±0.03mm
<b>Load Capacity</b>	600kg
<b>Motors</b>	Yaskawa Servo Motors
<b>Warranty</b>	2 Year Warranty



**- PLS ADVANCED LASER SYSTEMS - AUTHORISED DEALERS -**

**NSW**

Techie Tools  
0490 048 307

info@techietools.com.au

**QLD**

Sign to Badge  
07 3412 0285

simon@snsolutions.com.au

**VIC**

Prytec Head Office  
03 8372 6444

sales@prytec.com.au

**WA**

Ramlec Enterprises  
0430 299 289

admin@ramlec.com

**SA**

Prytec Office  
0412 968 802

michael@prytec.com.au

**TECHIE**  
TOOLS



**Prytec**  
SOLUTIONS

**RAMLEC** ENTERPRISES

**Prytec**  
SOLUTIONS